

# MIMIK 10 BOLLARD WOODGRAIN

PERFORMANCE  
**IN** LIGHTING

powered by  
**GEWISS**



Pathway bollard series. Fixtures consist of:

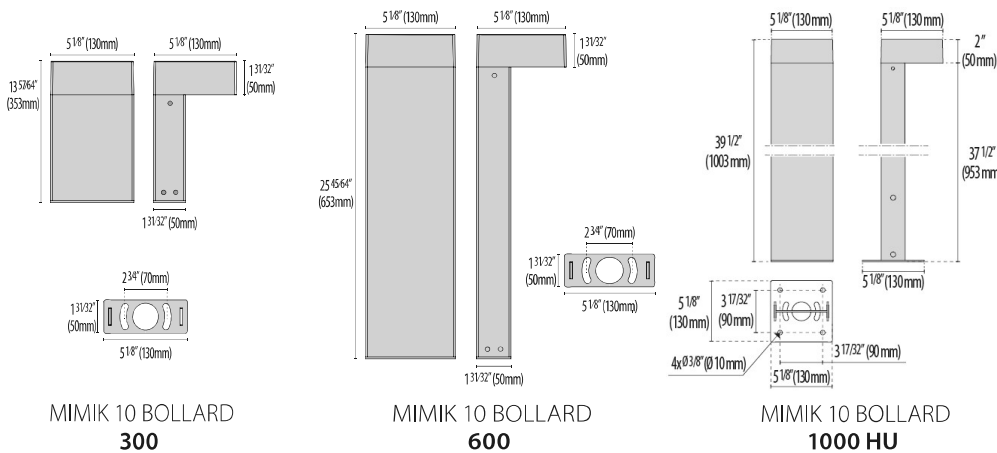
- Multi-step powder-coat painting process, optimized against UV rays and corrosion.
- Copper-free (<1%) precision die-cast aluminum housing and ring/faceplate.
- Copper-free (<1%) aluminum extruded post.
- Extra-clear, tempered, silk-screened, flat glass diffuser.
- Custom molded, anti-aging gasket(s).
- Stainless steel external hardware.
- Custom MCPCB utilized to maximize heat dissipation and promote long LED life.
- Type II light distribution.
- Input voltage: 120-277 V (50 / 60 Hz), integral driver.
- Optional, integral, line-voltage, passive infrared motion sensor (PIR SENSOR versions).

- Pre-wired factory sealed cable for external electrical connection included.
- Steel ground base plate included for bollards.
- Steel ground base plate available as accessory for HU versions (ordered separately).
- The luminaire may be configured with numerous options and multiple standard finishes. Not all options are available in all configurations. Consult factory for more information about specification sheet details to build your light.
- Product meets Buy American Act (BAA) requirements within ARRA.
- 5-year warranty.



## FINISHES

- AN-96 / Iron gray / Textured
- GR-94 / Aluminum metallic / Textured
- BK-81 / Black / Textured
- WH-87 / White / Textured
- RB-10 / Iron rust / Textured



Scan here  
for installation  
instructions

PERFORMANCE IN LIGHTING reserves the right to make all necessary changes without prior notice

PERFORMANCE IN LIGHTING USA, Inc.  
2621 Keys Pointe Conyers GA 30013 - United States  
Tel: 770 822 2115

info.usa@pil.lighting  
www.performanceinlighting.com/us

REVISION 01  
03/24

# Order Guide – MIMIK 10 BOLLARD WOODGRAIN

Order code example: **M10BOLWG-**



M10BOLWG-

Woodgrain Option	Bollard Height	Wattage	Optics	CCT	Finish	Voltage	Controls	Accessories	
WGF1	300	10W	T2	27K	BK	UNV	NA	GFCI	
WGF2	14 inch*	10 watt*	Type 2 (11W Max)	2700K	Textured Black	120-277V*	Non Dim*	20 amp outlet	
WGF3	600	11W	T3	3K	IG	120V	0-10V	OCC	
WGF4	26 inch*	11 watt*	Type 3 (10W Max)	3000K*	Iron Gray*	120V Only	0-10V Dim	Occupancy sensor	
WGF5	1000HU	XX		35K	AM		ELV		
WGF6	39 inch	Specify wattage must be within range		3500K	Aluminum Metallic*		ELV Dim	LB	
WGF7	Heavy Use*							Large base	
WGF8	XX			4K					
WGF9	Specify Height			4000K*		WH			
WGF10	(10 inch min)					Textured White		DBL	
WGF11				5K				Double head fixture	
WGF12	WGF may not work for all custom heights		*Standard Wattages		5000K				
WGF13					65K	IR			
					6500K	Iron Rust			SIGN
WGF options shown on next page	Contact Factory		T2- 11W T3- 10W		RED	CC			Custom Signage
				Static Red	Custom Color			Options shown on last page	
				BLU					
				Static Blue					
				GRN					
				Static Green					
				AMB					
				Static Amber (turtle- friendly)					

\*STANDARD OPTION, SHORTER LEAD TIME, NO MOQ\*  
70 CRI STANDARD - OTHER OPTIONS AVAILABLE

# MIMIK 10 BOLLARD

PERFORMANCE  
**IN** LIGHTING

powered by  
**GEWISS**

LUMEN OUTPUT    Distributed Lumen Output

MIMIK 10 BOLLARD (70CRI)						
	2700K	3000K	3500K	4000K	5000K	6500K
10W	614	633	652	671	690	709
11W	659	744	829	915	1000	1085

70 CRI STANDARD - OTHER OPTIONS AVAILABLE

## WOODGRAIN FINISH OPTIONS



PERFORMANCE IN LIGHTING reserves the right to make all necessary changes without prior notice

PERFORMANCE IN LIGHTING USA, Inc.  
2621 Keys Pointe Conyers GA 30013 - United States  
Tel: 770 822 2115

info.usa@pil.lighting  
www.performanceinlighting.com/us

REVISION 01  
03/24

# MIMIK 10 BOLLARD WOODGRAIN

PERFORMANCE  
**IN** LIGHTING

powered by  
**GEWISS**

GFCI / USB



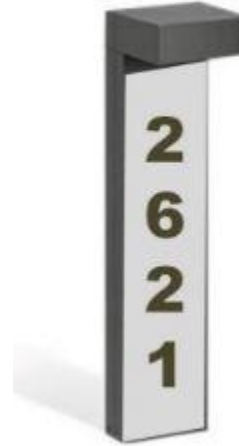
Occupancy  
Sensor



Double Head  
Fixture

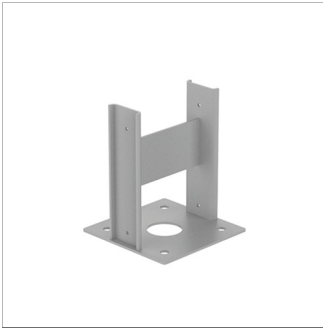


Sign



**REQUIRED FOR INSTALLATION** 1000 HU Only - Standard base provided with each non-HU fixture

DESCRIPTION	FINISH	PART NUMBER
MIMIK 10 BOLLARD 1000		
Plate HU MIMIK10 POST AM		<b>3112991</b>
Plate HU MIMIK10 POST IG		<b>3112992</b>



**3112991**

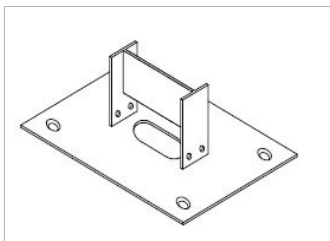


**3112992**

## OPTIONAL ACCESSORIES

### LB- Large Base

Suitable for all Non-HU Fixtures  
painted to match fixture finish



PERFORMANCE IN LIGHTING reserves the right to make all necessary changes without prior notice

**PERFORMANCE IN LIGHTING USA, Inc.**  
2621 Keys Pointe Conyers GA 30013 - United States  
Tel: 770 822 2115

info.usa@pil.lighting  
www.performanceinlighting.com/us

**REVISION 01**  
**03/24**